



FILE COPY

430 East Genesee Street
Suite 401
Syracuse NY 13202

tel. (315) 422-4949
fax. (315) 422-2124
web. www.swredev.com

March 24, 2009

Mr. Greg Townsend
NYSDEC Region 7
615 Erie Boulevard West
Syracuse, New York 13163

RE: Post Remediation Monitoring Report – First Quarter 2009
South Hill Business Campus (SHBC)
950 Danby Rd, Ithaca, Tompkins County, NY
BCP Site No. C755012

Dear Mr. Townsend:

This letter submits results of first quarter 2009 post-remediation sampling conducted at the South Hill Business Campus (SHBC) site in Ithaca, New York (Figure 1). On January 29, 2009 S&W Redevelopment of North America, LLC (SWRNA) collected air and groundwater samples in accordance with the NYSDEC approved Site Management Plan (SMP). The first quarter 2009 post-remediation sampling event was the first to be conducted at the site since the Certificate of Completion (COC) was issued in December 2008, following implementation of in-situ chemical oxidation (ISCO) to remediate groundwater, and the installation of a sub-slab depressurization system (SSDS) and a positive pressure air exchange system to mitigate potential soil vapor intrusion. Quarterly monitoring per the SMP is being done to establish the effectiveness of the remedial actions completed. The next post-remediation sampling event is scheduled for April 2009.

The first quarter 2009 monitoring event included sampling groundwater from twelve (12) post-remediation monitoring wells (Figure 2), and collecting indoor air samples from five (5) locations and one (1) ambient outdoor air sample (Figure 3). The following summary describes sampling methods and analytical results for the groundwater and air samples that were taken.

GROUNDWATER SAMPLE COLLECTION AND RESULTS

The depth to groundwater was measured in each of thirteen (13) post-remediation monitoring wells prior to collecting groundwater samples, per the approved SMP. Based on recorded water levels, overburden (Figure 4) and bedrock (Figure 5) groundwater contour maps were prepared for January 2009. The general direction of groundwater flow for overburden and bedrock is to the west, consistent with previous Remedial Investigation (RI) results, and the regional topographic slope. Figure 4 indicates a slight

convergence of overburden groundwater flow towards the swale, as was previously noted in the *RI Report* (SWRNA, 2008). This convergence is more pronounced in the upper bedrock zone, per Figure 5, which is consistent with prior evidence that the swale acts as a local groundwater discharge zone for the site.

Field parameters (pH and Eh) were measured for 12 of the 13 wells at the time of sampling (Table 1). One (1) well, MW06-25OB, did not contain enough water to measure field parameters or to collect a sample in January 2009. Groundwater samples were collected by low-flow methods using a bladder pump, in accordance with the SMP, from nine (9) wells. Groundwater samples were collected using bailers for three (3) wells (MW-7, MW08-29BR, and IOW-4) that did not contain enough water to be sampled using low-flow methods (Table 1).

Groundwater samples were analyzed by Test America Laboratories, Inc for target compound list Volatile Organic Compounds (VOCs) by EPA Method 8260, Total Organic Carbon (TOC), and Chemical Oxygen Demand (COD), in accordance with the SMP.

Post-remediation groundwater analytical results for January 2009 are summarized and compared to Class GA water quality standards and guidance values, as per the NYSDEC Division of Water Technical and Operational Guidance Series (TOGS, June 1998), in Table 2. The January 2009 laboratory report is included in Appendix A. Groundwater chlorinated VOC concentrations for January 2009 are shown on Figure 6. Historic water quality data, including RI and pre-RI data (where such data is available), are also included on Table 3 and Figure 6 (chlorinated VOCs only), for comparison with January 2009 results.

A decrease in VOC concentrations is evident in certain overburden and bedrock monitoring wells within and downgradient of the ISCO target treatment zone. No VOCs were detected above laboratory detection limits in the January 2009 groundwater sample from downgradient bedrock well MW08-29BR. No VOCs were detected above groundwater standards in January 2009 samples from bedrock wells IOW-2 and MW07-27BR. Compared to pre-ISCO data from 2007, the January 2009 total VOC concentration in well MW07-27BR has declined by 88%. The January 2009 total VOC concentration in MW06-24BR has declined from 2006 levels by 99%. The January 2009 total VOC concentration for well IOW-4 is 67% lower than June 2008 pre-remediation levels, including a decrease of cis-1,2-dichloroethene (DCE) to below groundwater standards. Future quarterly monitoring events conducted in accordance with the SMP will evaluate how these effects continue over time.

Post-remediation monitoring overburden wells MW-2, MW-3, MW-7, and MW06-19OB, and bedrock wells MW06-25BR, IOW-1, and IOW-3 do not yet show a significant decrease in VOC levels. Monitoring wells such as MW-2 and MW-3, for which pre-RI (pre-2006) historical data are available, appear to experience a seasonal

fluctuation in VOC concentrations. Historical groundwater data from April 2003 and January 2004 for MW-2 and MW-3 (Table 3) indicate VOC concentrations comparable to January 2009 levels. RI analytical data prior to ISCO (2006-2008) were collected primarily during summer months, and indicate generally lower VOC concentrations compared to both January 2004 and 2009. This suggests that seasonal factors may temporarily influence groundwater quality for some wells. Data from future post-remediation sampling events will be used to further evaluate potential seasonal influences and ISCO effectiveness, particularly for monitoring wells for which no pre-RI historic data are available.

AIR SAMPLE RESULTS

Air samples were collected using one-liter Summa canisters with 8-hour flow regulators at five indoor (5) locations and one (1) outdoor location specified in the SMP (Figure 3). Air samples were analyzed for VOCs by EPA Method TO-15 by Centek Laboratories, LLC.

Air sample analytical results for January 2009 are summarized and compared to May, September, and October 2008 results in Table 4. The January 2009 laboratory report is included in Appendix A.

The indoor and outdoor air samples for January 2009 contained a number of VOCs that have been historically detected in previous sampling events. January 2009 levels of TCE, the primary contaminant of concern with respect to soil vapor intrusion, were lower in each indoor air sample than during any other air monitoring event. TCE was not detected in the January 2009 outdoor air sample, but it has been detected historically in outdoor air at the site.

CONCLUSIONS AND RECOMMENDATIONS

Groundwater analytical data for January 2009 indicate that VOC levels have declined in approximately half of the post-remediation monitoring wells, both within and downgradient of the ISCO target treatment zone. Other monitoring wells where a significant decline is not yet evident may be influenced by seasonal VOC fluctuations. As noted in the SMP, ISCO effectiveness monitoring may require multiple post-remediation sampling events for trends to be evident. ISCO effectiveness and seasonal trends will be further evaluated as subsequent quarterly monitoring events are completed in accordance with the SMP.

January 2009 air sample data indicate TCE concentrations are generally lower than previous events. The SSDS and positive pressure air exchange system continue to operate in accordance with the SMP to mitigate soil vapor intrusion.

Following the second quarter 2009 air and groundwater sampling event, scheduled for April 2009, a six-month post-remediation summary report will be provided per the SMP.

If you have any questions please call me at (315) 422-4949.

Very Truly Yours,

S&W REDEVELOPMENT OF NORTH AMERICA, LLC



Robert M. Petrovich
Executive Vice President

cc: Susan Shearer, NYSDOH
Andrew Sciarabba, South Hill Business Campus

Attachments: Table 1. Groundwater Field Observations
Table 2. Summary of January 2009 Groundwater Analytical Results
Table 3. Summary of Pre- and Post-Remediation Groundwater Analytical Results
Table 4. Summary of Air Sample Analytical Results
Figure 1. Site Location
Figure 2. Monitoring Well Locations
Figure 3. Air Sample Locations
Figure 4. January 2009 Overburden Groundwater Contours
Figure 5. January 2009 Bedrock Groundwater Contours
Figure 6. Chlorinated VOC Concentrations
Appendix A. Laboratory Analytical Reports.

TABLES

Table 1. Field Observations. Post-Remediation Monitoring. South Hill Business Campus, 950 Danby Road, Ithaca, NY.

January 29, 2009 Groundwater Sampling Event
 weather conditions: 20-25°, sunny, snow and ice on ground

Well ID	Top PVC Elev	Depth to Water (ft)	GW Elevation (ft)	Total Depth of Well (ft)	Water Volume (Gallons)	Approx Volume Purged (Gallons)	Sampling Method	pH	Eh	Notes
MW-2	819.36	9.21	810.15	13.09	0.62	2	Low Flow	7.31	178	
MW-3	808.96	18.13	790.83	19.94	0.29	0.75	Low Flow	7.36	203.5	
MW-7	818.35	14.25	804.10	14.88	0.10	No Purge	Bailer	7.57	124.2	Water turbid
MW06-19OB	783.57	3.27	780.30	9.88	1.06	1.5	Low Flow	6.73	110.6	Well began to go dry after 1.5 Gallons purged
MW06-25OB	784.55	10.12	774.43	10.20	0.01	No Purge	Not Sampled	Insufficient volume		Not enough water to sample
MW06-24BR	818.42	16.21	802.21	21.50	0.85	2.5	Low Flow	7.34	106.9	
MW06-25BR	781.90	12.80	769.10	19.48	1.07	3	Low Flow	6.94	76.5	
MW07-27BR	800.54	10.19	790.35	21.69	1.84	5.5	Low Flow	6.51	97.1	
MW08-29BR	780.56	26.80	753.76	28.41	0.26	No Purge	Bailer	7.81	112.4	pH and Eh taken with gray, turbid water after sampling
IOW-1	818.45	15.21	803.24	23.50	1.33	4	Low Flow	7.02	222.1	
IOW-2	818.02	18.59	799.43	25.26	1.07	4	Low Flow	7.16	86.4	
IOW-3	818.47	12.06	806.41	18.00	0.95	2.5	Low Flow	7.16	71.3	
IOW-4	818.33	7.31	811.02	7.98	0.11	No Purge	Bailer	6.72	93	Water deep reddish-brown color, turbid

pH and Eh measured with YSI 6820 water quality meter.

Table 2. Summary of January 2009 Groundwater Analytical Results, VOCs, COD, and TOC. Post-Remediation Monitoring, 1st Quarter 2009. South Hill Business Campus, 950 Danby Road, Ithaca, NY.

Compound	Class GA Standard	MW-2	MW-3	MW-7	MW06-19OB	MW06-24BR	MW06-25BR	MW07-27BR	MW08-29BR	IOW-1	IOW-2	IOW-3	IOW-4
Acetone	50	U	U	U	U	U	U	U	U	U	U	U	28 *
Benzene	1	U	U	U	U	U	U	U	U	U	U	U	U
Bromodichloromethane	50	U	U	U	U	U	U	U	U	U	U	U	2.4 J
Bromoform	50	U	U	U	U	U	U	U	U	U	U	U	5.5 J
Bromomethane	5	U	U	U	U	U	U	U	U	U	U	U	U
Methyl Ethyl Ketone	50	U	U	U	U	U	U	U	U	U	U	U	U
Carbon disulfide	60	U	U	U	U	U	U	U	U	U	U	U	U
Carbon tetrachloride	5	U	U	U	U	U	U	U	U	U	U	U	U
Chlorobenzene	5	U	U	U	U	U	U	U	U	U	U	U	U
Chloroethane	5	U	U	U	U	U	U	U	U	U	U	U	U
Chloroform	7	U	U	U	U	U	U	U	U	U	U	U	U
Chloromethane	U	U	U	U	U	U	U	U	U	U	U	U	U
Dibromochloromethane	50	U	U	U	U	U	38	U	U	U	U	U	U
1,1-Dichloroethane	5	U	U	U	1.5 J	U	U	U	U	U	U	U	U
1,2-Dichloroethane	0.6	U	U	U	U	U	25	U	U	U	U	U	U
1,1-Dichloroethene	5	U	U	U	U	U	U	U	U	U	U	U	U
1,2-Dichloropropane	1	U	U	U	U	U	U	U	U	U	U	U	U
cis-1,3-Dichloropropene	0.4	U	U	U	U	U	U	U	U	U	U	U	U
trans-1,3-Dichloropropene	0.4	U	U	U	U	U	U	U	U	U	U	U	U
Ethylbenzene	5	U	U	U	U	U	U	U	U	U	U	U	U
2-Hexanone	50	U	U	U	U	U	U	U	U	U	U	U	U
Methylene Chloride	5	U	U	U	U	U	U	U	U	U	U	U	U
methyl isobutyl ketone	U	U	U	U	U	U	U	U	U	U	U	U	U
Styrene	5	U	U	U	U	U	U	U	U	U	U	U	U
1,1,2,2-Tetrachloroethane	5	U	U	U	U	U	U	U	U	U	U	U	U
Tetrachloroethene	5	U	U	U	U	U	U	U	U	U	U	U	U
Toluene	5	U	U	U	7.5	U	420	U	U	U	U	U	U
1,1,1-Trichloroethane	5	U	U	U	U	U	U	U	U	U	U	U	U
1,1,2-Trichloroethane	1	U	U	U	U	U	U	0.82 J	U	2,700	3.3 J	1,200	43
Trichloroethene	5	190	100	2,800	30	37	72	U	U	U	U	U	U
Vinyl chloride	2	310	U	590	U	1.7 J	20	U	U	U	U	U	U
Xylenes, Total	5	U	U	U	U	U	U	U	U	U	U	U	U
cis-1,2-Dichloroethene	5	400	29	6,600	2 J	25	41	U	U	250 J	U	91 J	3.1 J
trans-1,2-Dichloroethene	5	14 J	U	140 J	U	1.1 J	U	U	U	U	U	U	U
Total VOCs^ (µg/L)		914	129	10,130	41.0	64.8	616	0.82	na	2,950	3.3	1,291	48.5
Total Organic Carbon (mg/L)		U	U	U	U	U	U	U	U	U	U	U	U
Chemical Oxygen Demand (mg/L)		21.8	U	620	10.8	7.5 J	63.9	17.8	11.1	15.9	34	5.6 J	63.2

na - data not available
 ^ Total VOCs does not include compounds detected in method blanks (B - acetone and methylene chloride). Methyl ethyl ketone (MEK) is also excluded because ketones are known to be produced by the reaction of potassium permanganate with chlorinated organic compounds.
 J - Estimated concentration detected below quantitation limit
 * - LCS or LCSD exceeds the control limit
 U - below detection limit
 VOC Above Standard

Table 3 (Page 1 of 2). Summary of Historic Groundwater VOC Analytical Results Pre- and Post-ISCO Implementation. Post-Remediation Monitoring. South Hill Business Campus, 950 Danby Road, Ithaca, NY.

Compound ug/L (ppb)	Class GA Standard	MW-2					MW-3				MW-7				MW06-19OB			MW06-25OB			IOW-4						
		Apr-03	Jan-04	RI 2006	Jun-08	Aug-08	Jan-09	Apr-03	Jan-04	RI 2006	Jun-08	Jan-09	Jan-04	RI 2006	Jun-08	Jan-09	RI 2006	Jun-08	Jan-09	RI 2006	Jun-08	Jan-09	RI 2006	Jun-08	Aug-08	Jan-09	
Acetone	50	U	U	U	3.6 JB	760 B	U	U	U	1.8 JB	U	22.1	U	U	U	U	U	1.7 JB	U	5.7	U	U	U	U	U	U	U
Benzene	1	U	U	U	U	U	U	U	U	U	U	U	U	U	U	U	U	U	U	U	U	U	U	U	U	U	U
Bromodichloromethane	50	NS	NS	U	U	U	U	NS	NS	U	U	NS	U	U	U	U	U	U	U	U	U	U	U	U	U	U	U
Bromoform	50	NS	NS	U	U	U	U	NS	NS	U	U	NS	U	U	U	U	U	U	U	U	U	U	U	U	U	U	2.4 J
Bromomethane	5	NS	NS	U	U	U	U	NS	NS	U	U	U	U	U	U	U	U	U	U	U	U	U	U	U	U	U	5.5 J
Methyl Ethyl Ketone	50	U	U	U	U	160	U	NS	NS	U	U	U	U	U	U	U	U	U	U	U	U	U	U	U	U	U	U
Carbon disulfide	60	NS	NS	U	U	U	U	NS	NS	U	U	U	U	U	U	U	U	U	U	U	U	U	U	U	U	U	U
Carbon tetrachloride	5	NS	NS	U	U	U	U	NS	NS	U	U	U	U	U	U	U	U	U	U	U	U	U	U	U	U	U	U
Chlorobenzene	5	NS	NS	U	U	U	U	NS	NS	U	U	U	U	U	U	U	U	U	U	U	U	U	U	U	10 J	U	U
Chloroethane	5	NS	NS	U	U	U	U	NS	NS	U	U	U	U	U	U	U	U	U	U	U	U	U	U	U	U	U	U
Chloroform	7	U	U	U	U	U	U	NS	NS	U	U	U	U	U	U	U	U	U	U	U	U	U	U	U	U	U	U
Chloromethane	5	NS	NS	U	U	U	U	NS	NS	U	U	U	U	U	U	U	U	U	U	U	U	U	U	U	U	U	U
Dibromochloromethane	50	U	U	U	U	U	U	U	U	U	U	U	U	U	U	U	U	U	U	U	U	U	U	U	U	U	U
1,1-Dichloroethane	5	7.4	10.6	1.7 J	1.6 J	U	U	NS	NS	U	U	U	U	U	U	U	U	U	U	U	U	U	U	U	U	U	U
1,2-Dichloroethane	0.6	NS	NS	U	U	U	U	NS	U	U	U	U	U	U	U	U	U	U	U	U	U	U	U	U	U	U	U
1,1-Dichloroethene	5	NS	1.98	U	U	U	U	NS	NS	U	U	U	U	U	U	U	U	U	U	U	U	U	U	U	U	U	U
1,2-Dichloropropane	1	NS	NS	U	U	U	U	NS	NS	U	U	U	U	U	U	U	U	U	U	U	U	U	U	U	U	U	U
cis-1,3-Dichloropropene	0.4	NS	NS	U	U	U	U	NS	NS	U	U	U	U	U	U	U	U	U	U	U	U	U	U	U	U	U	U
trans-1,3-Dichloropropene	0.4	NS	NS	U	U	U	U	NS	NS	U	U	U	U	U	U	U	U	U	U	U	U	U	U	U	U	U	U
Ethylbenzene	5	NS	NS	U	U	U	U	NS	NS	U	U	U	U	U	U	U	U	U	U	U	U	U	U	U	U	U	3.9 JB
2-Hexanone	50	NS	NS	U	U	U	U	NS	NS	U	U	U	U	U	U	U	U	U	U	U	U	U	U	U	U	U	18 JB
Methylene Chloride	5	NS	NS	U	U	U	U	NS	NS	U	U	U	U	U	U	U	U	U	U	U	U	U	U	U	U	U	U
methyl isobutyl ketone	5	NS	NS	U	U	U	U	NS	NS	U	U	U	U	U	U	U	U	U	U	U	U	U	U	U	U	U	U
Styrene	5	NS	NS	U	U	U	U	NS	NS	U	U	U	U	U	U	U	U	U	U	U	U	U	U	U	U	U	U
1,1,2,2-Tetrachloroethane	5	NS	NS	U	U	U	U	NS	NS	U	U	U	U	U	U	U	U	U	U	U	U	U	U	U	U	U	U
Tetrachloroethene	5	NS	NS	U	U	U	U	NS	NS	U	U	U	U	U	U	U	U	U	U	U	U	U	U	U	U	U	U
Toluene	5	6.2	U	U	U	U	U	1.04	U	U	U	U	U	U	U	U	U	U	U	U	U	U	U	U	U	U	U
1,1,1-Trichloroethane	5	U	1.73	U	U	U	U	2.87	4.37	U	U	U	U	U	U	U	U	U	U	U	U	U	U	U	U	U	U
1,1,2-Trichloroethane	1	NS	NS	U	U	U	U	NS	NS	U	U	U	U	U	U	U	U	U	U	U	U	U	U	U	U	U	U
Trichloroethene	5	252	221	92	53	U	U	40.3	82.1	36	32	100	448	340	U	U	U	U	U	U	U	U	U	U	U	U	U
Vinyl chloride	2	152	79.4	6.8 J	51	U	U	U	U	U	U	U	97.3	U	U	U	U	U	U	U	U	U	U	U	U	U	U
Xylenes, Total	5	NS	NS	U	U	U	U	NS	NS	U	U	U	NS	U	U	U	U	U	U	U	U	U	U	U	U	U	U
cis-1,2-Dichloroethene	5	NS	155	16	73	U	U	NS	18.6	5.2	5.9	29	3,970	820	U	U	U	U	U	U	U	U	U	U	U	U	U
trans-1,2-Dichloroethene	5	12.9	6.63	1.5 J	3.3 J	U	U	U	U	U	U	U	46.3	28 J	U	U	U	U	U	U	U	U	U	U	U	U	U
Total VOCs^ (ppb)		430.5	476.3	118.0	181.9	12	914	44.21	106.8	41.2	37.9	129	4,570	1,188	na	10,130	20.5	30.8	41	365.5	na	na	na	145	10	48.5	

na - data not available
 ^ Total VOCs does not include compounds detected in method blanks (B - acetone and methylene chloride). Methyl ethyl ketone (MEK) found in August 2008 and January 2009 samples is also excluded because ketones are known to be produced by the reaction of potassium permanganate with chlorinated organic compounds.
 NS - Compound not analyzed (2003 and 2004 Sampling used smaller analyte list)
 J - Estimated concentration detected below quantitation limit
 * - LCS or LCSD exceeds the control limit
 U - below detection limit
VOC Above Standard

2003 Data (MW-2 and MW-3) provided by Environmental Products and Services, Inc. 2004 Data (MW-2, MW-3, and MW-7) provided by ERM.
 Samples collected in 2006 (RI) and June 2008 are pre-ISCO injection. Samples collected in August 2008 are during ISCO injection. Samples collected in January 2009 are post-ISCO injection.



FIGURES



LEGEND



Building



ISCO Injection Trench



Monitoring wells used for Post-ISCO Groundwater Monitoring.



SCALE in FEET



S&W Redevelopment
of North America, LLC.
Syracuse, New York
DATE:2/2009 JOB No: N0901

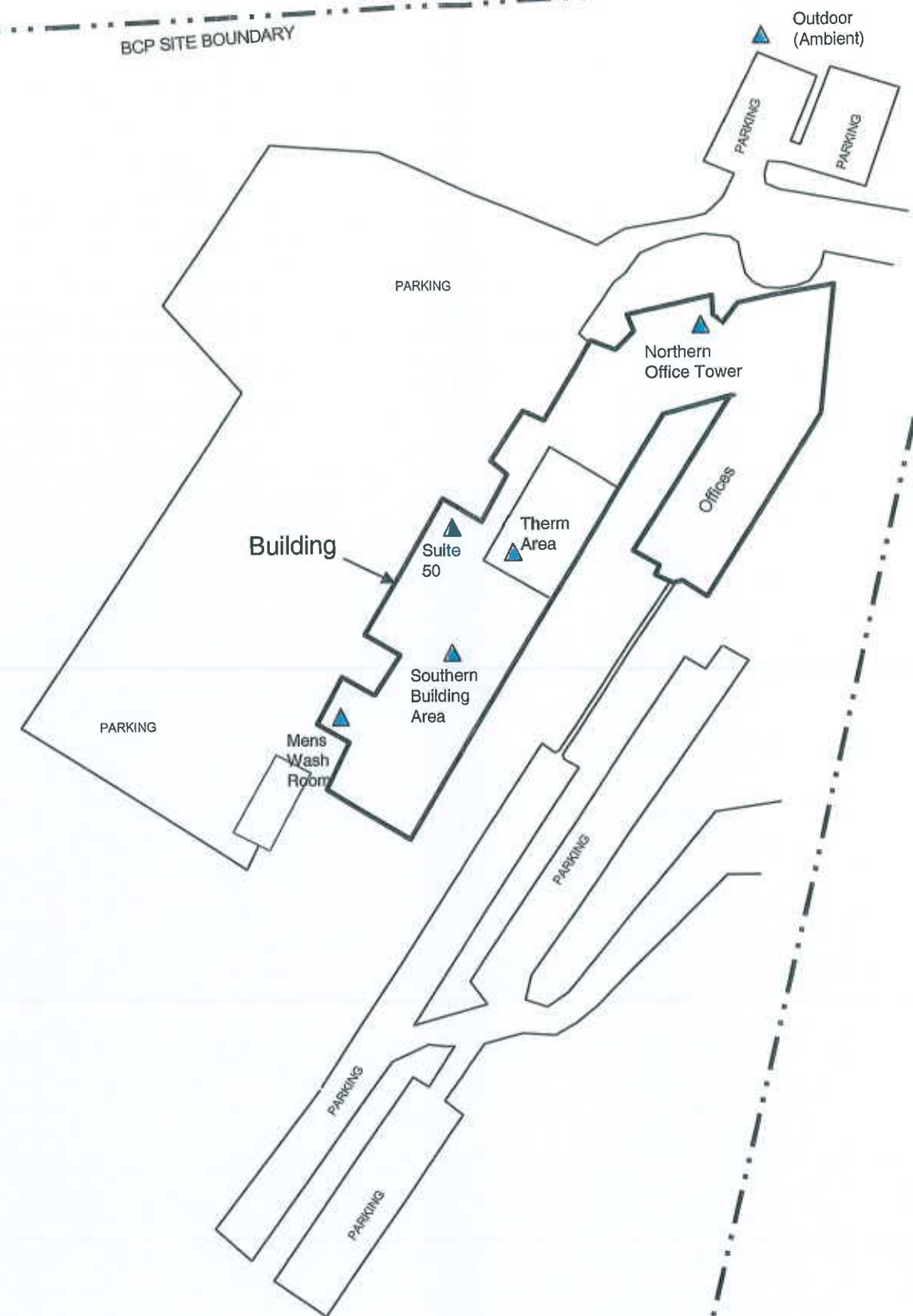
Post Remediation Monitoring
South Hill Business Campus
950 Danby Road, Tompkins Co., New York
BCP Site # C755012

Figure 2
Post-Remediation Monitoring Well Locations

X-REF: NAMES?
 2009/Feb/SW/djh
 J:\PROJECTS\N-xxxx\N9000\N0901 - South Hill Business Campus\Monitoring 2009\200901 report\SHBC_0901_Fig2_MW Locs.dwg



BCP SITE BOUNDARY



AIR SAMPLING LOCATIONS

▲ Post-Remediation Air Sample Location

Note:
Five (5) indoor and one (1) outdoor sample will be collected every three (3) months, concurrent with groundwater sampling program.



S&W Redevelopment
of North America, LLC
Syracuse, New York

Post-Remediation Monitoring
South Hill Business Campus
950 Danby Road, Ithaca, Tompkins Co., New York
BCP Site # C755012

DATE: 2/2009

JOB No. N0901

Figure 3
Air Sample Locations



LEGEND

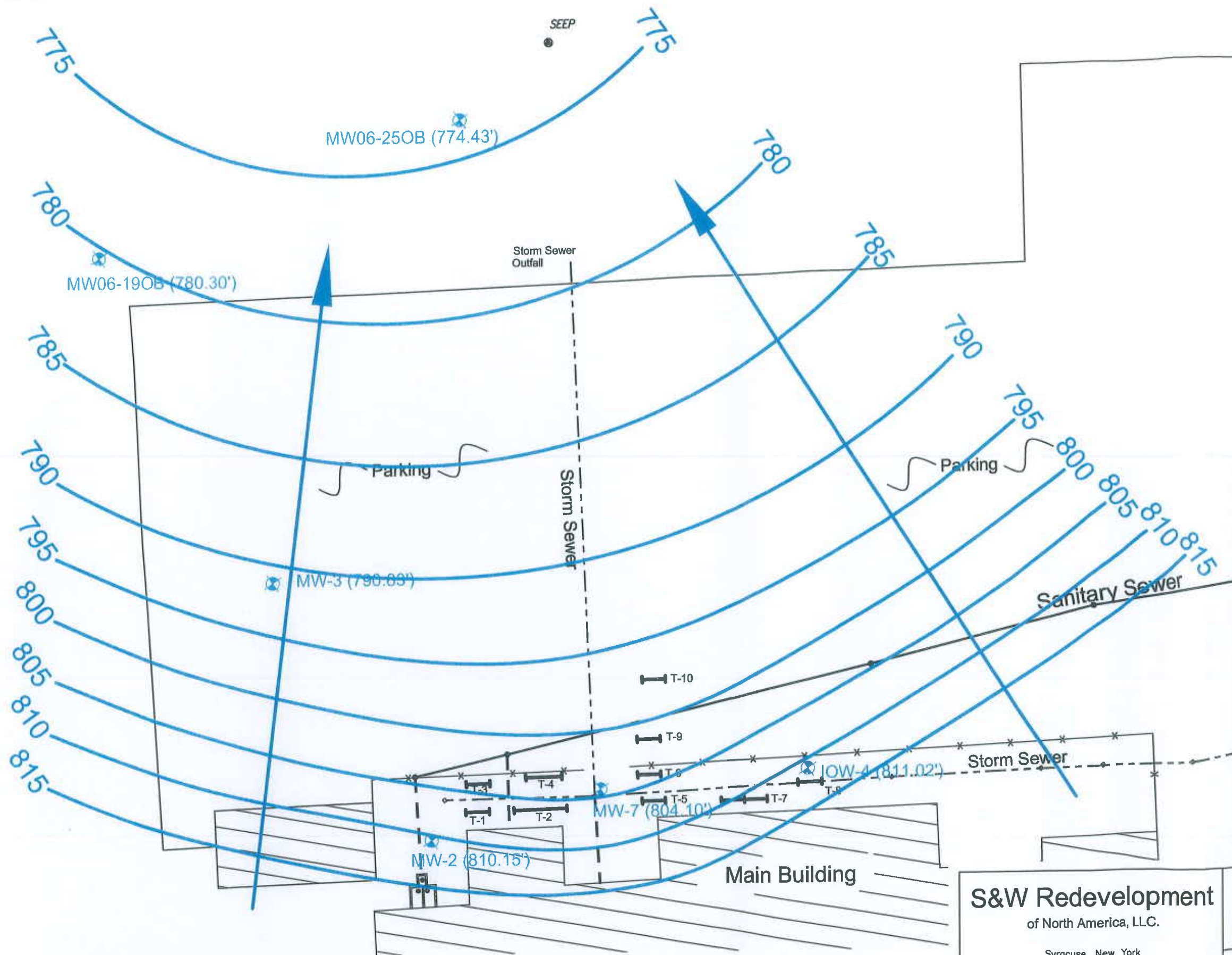


Building



ISCO Injection Trench

Observation wells used for Post-ISCO Groundwater Monitoring.



X:\REF: NAMES? 2009\Feb\25\4th\PROJECTS\K-exxxx\N0000\N0901 - South Hill Business Campus\Monitoring 2009\200901 report\SHBC_0901_Fig4_OB GW contours Jan09.dwg

SCALE in FEET



S&W Redevelopment
of North America, LLC.

Syracuse, New York

DATE:2/2009 JOB No: N0901

Post Remediation Monitoring
South Hill Business Campus
950 Danby Road, Tompkins Co., New York
BCP Site # C755012

Figure 4
Overburden Groundwater Contours, January 2009



LEGEND



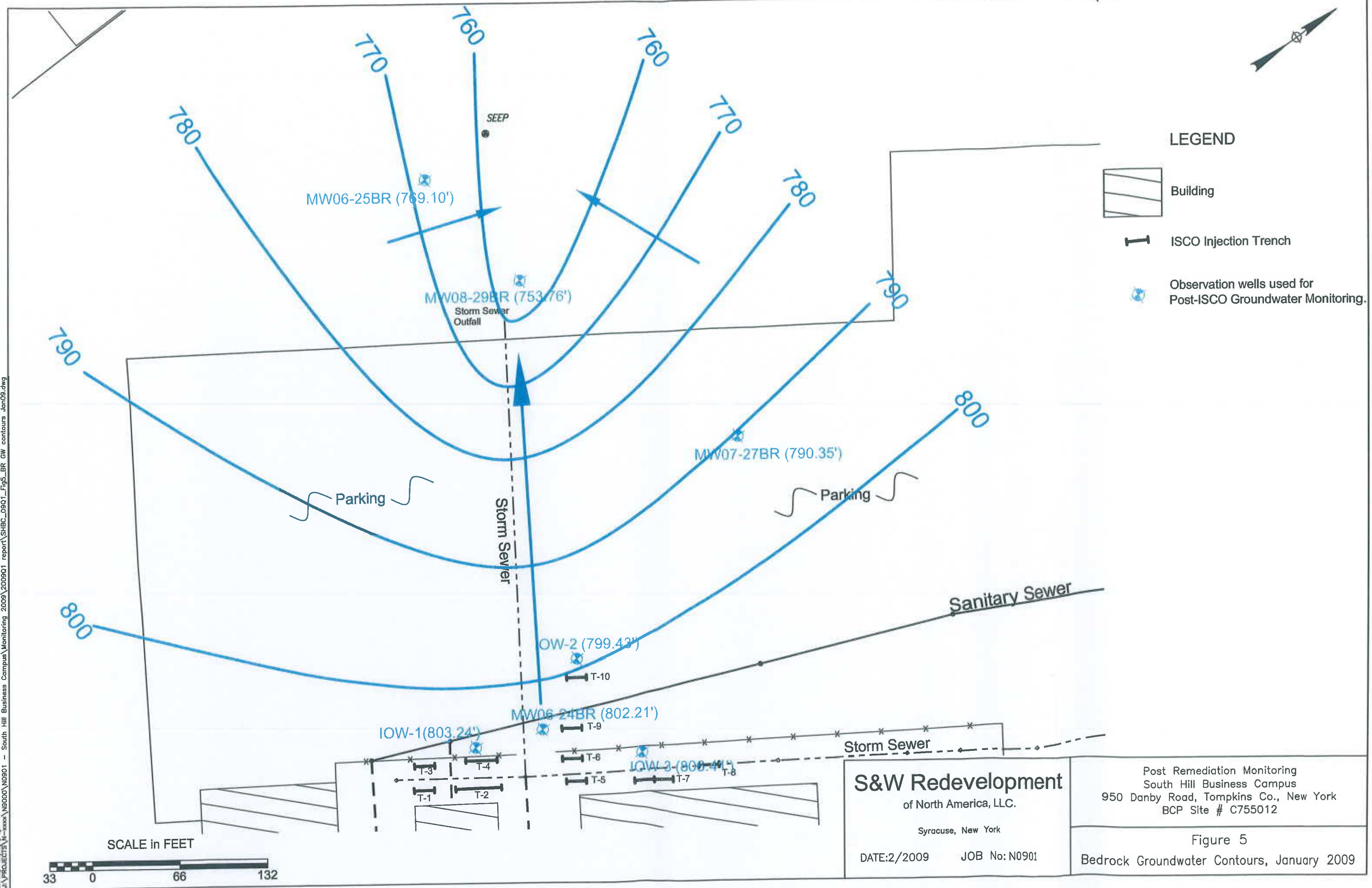
Building



ISCO Injection Trench



Observation wells used for Post-ISCO Groundwater Monitoring.



X-REF: NAMES?
2009/02/27/4th
PROJECTS\N-xxxx\N9000\N9001 - South Hill Business Campus\Monitoring 2009\200901 report\SHBC_0901_Fig5_BR_GW_contours Jan09.dwg

S&W Redevelopment
of North America, LLC.
Syracuse, New York
DATE:2/2009 JOB No: N0901

Post Remediation Monitoring
South Hill Business Campus
950 Danby Road, Tompkins Co., New York
BCP Site # C755012

Figure 5
Bedrock Groundwater Contours, January 2009

SCALE in FEET





MW06-19OB	RI 2006	Jun-08	Jan-09
TCE	14	18	30
DCE	1.6 J	2 J	2 J
VC	ND	1.7 J	ND

MW06-25BR	RI 2006	Mar-08	Jun-08	Jan-09
TCE	57	50		72
DCE	42	45	DRY	41
VC	ND	10 J		20

MW06-25OB	RI 2006	Jun-08	Jan-09
TCE	23		
DCE	59	DRY	DRY
VC	2.5		

MW08-29BR	Mar-08	Apr-08	Jan-09
TCE	4.6 J	3.4 J	ND
DCE	5 J	2.7 J	ND
VC	ND	ND	ND

MW07-27BR	RI 2007	Jun-08	Jan-09
TCE	4.9	2.2 J	0.82 J
DCE	1 J	ND	ND
VC	ND	ND	ND

MW-3	Apr-03	Jan-04	RI 2006	Jun-08	Jan-09
TCE	40.3	82.1	36	32	100
DCE	NS	18.6	5.2	5.9	29
VC	ND	ND	ND	ND	ND

MW-7	Jan-04	RI 2006	Jan-09
TCE	448	340	2,800
DCE	3,970	820	6,600
VC	97.3	ND	590

IOW-1	Jun-08	Aug-08	Jan-09
TCE	310	2,400	2,700
DCE	18	70 J	250 J
VC	2.1 J	ND	ND

MW-2	Apr-03	Jan-04	RI 2006	Jun-08	Aug-08	Jan-09
TCE	252	221	92	53	ND	190
DCE	NS	155	16	73	ND	400
VC	152	79.4	6.8 J	51	ND	310

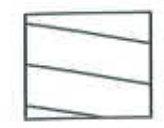
IOW-2	Jun-08	Aug-08	Jan-09
TCE	1.8 J	ND	3.3 J
DCE	ND	ND	ND
VC	ND	ND	ND

MW06-24BR	RI 2006	Jun-08	Aug-08	Jan-09
TCE	2,200	88	ND	37
DCE	3,700	180	ND	25
VC	200 J	7.5	ND	1.7 J

IOW-3	Jun-08	Aug-08	Jan-09
TCE	650	1,300	1,200
DCE	53	98	91 J
VC	7.7 J	ND	ND

IOW-4	Jun-08	Aug-08	Jan-09
TCE	120	ND	43
DCE	25 J	ND	3.1 J
VC	ND	ND	ND

LEGEND



Building



ISCO Injection Trench

Observation wells used for Post-ISCO Groundwater Monitoring. Call-outs show pre- and post-ISCO chlorinated VOC concentrations.

Well ID	Sample Dates
TCE	[Trichloroethene] (ug/L)
DCE	[cis-1,2-dichloroethene] (ug/L)
VC	[Vinyl chloride] (ug/L)

ND = Not Detected
NS = Not Analyzed (DCE, Apr-03)
J = Estimated value

Note: August 2008 samples were collected during ISCO injection. January 2009 samples are Post-ISCO. 2003 Data (MW-2 and MW-3) provided by Environmental Products and Services, Inc. 2004 Data (MW-2, MW-3, and MW-7) provided by ERM.

X-REF: NAMES? 2009/Feb/Sy/djh J:\PROJECTS\N-xxxx\N9000\N0901 - South Hill Business Campus Monitoring 2009\200901 report\SHBC_0901_Fig6_Chlor_VOCs.dwg

SCALE in FEET



S&W Redevelopment
of North America, LLC.

Syracuse, New York

DATE:2/2009 JOB No: N0901

Post Remediation Monitoring
South Hill Business Campus
950 Danby Road, Tompkins Co., New York
BCP Site # C755012

Figure 6
Groundwater Chlorinated VOC Concentrations